

# CEON – PLM Solutions

Extend your SAP® Product Lifecycle Management system with innovative solutions from CEON. We have a range of solutions available to enhance and improve your PLM System. Hereby some information about our products.

## CEON Information Browser

The **CEON Information Browser** enables to glance in a structured, graphical way through SAP objects. The Information Browser has been developed on basis of SAP technology, it is a fully web based application, which enables to access drawings and other information about for instance equipment or manuals etc. into the smallest detail quickly and easily.

The module enables users to retrieve through different layers of an article/document BOM.

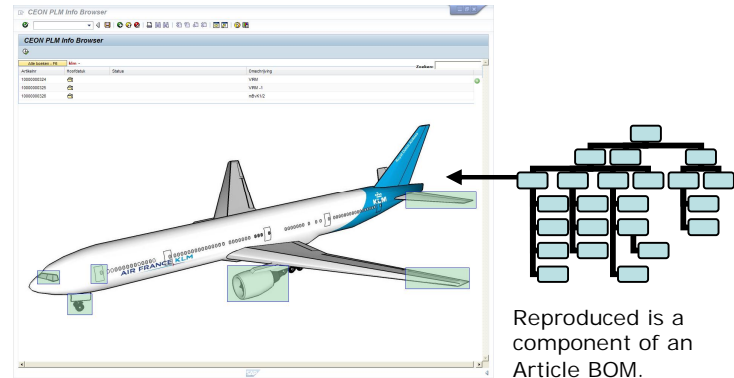
Per layer ‘hotspots’ can be posted to pictures which subsequently are linked to articles, documents, files and SAP transactions.

Thus users with the role of administrator can simply add images. By means of references to SAP-transactions updates can be carried out.

Access security is simply managed by means of the SAP authorisation feature. Back-up en recovery of the module have been included as a standard like configured in the rest of the SAP system. All information (data) are available in the SAP-system.

### Benefits of the application of the CEON Information Browser

- End users of PLM obtain quick and simple graphical access to equipment and the components equipments consists of. This increases efficiency of planning and accomplishment of maintenance.
- The module is fully integrated in SAP. It is completely web based, **no** installation is required from user side.
- Administrators of PLM in the user community can simply manage the objects library. They can insert hotspots and add images. All this results in less maintenance.
- Administration and maintenance of the module is simple. The software is namely open and is developed on basis of open industry standards/methods. Maintenance and implementation can be done by yourself or by a different party for example CEON Business Systems.



# CEON – Information Browser

## **When is this module available?**

The Nucleus of the module has already been developed. Modification of the Nucleus to specific requirements of customers is possible. Customer needs that apply to potential customers in general, are included in the Nucleus and are in principle available for all customers.

## **What are the cost for implementation of this module?**

For the Nucleus of the module a fixed amount is charged whereas for specific modifications and for implementation activities a cost calculation is made based on the number of mandays that will be spent on these modifications and on implementation of the system.

The price of the Nucleus is dependent on the number of users that will make use of this application.

## **SAP partnership**

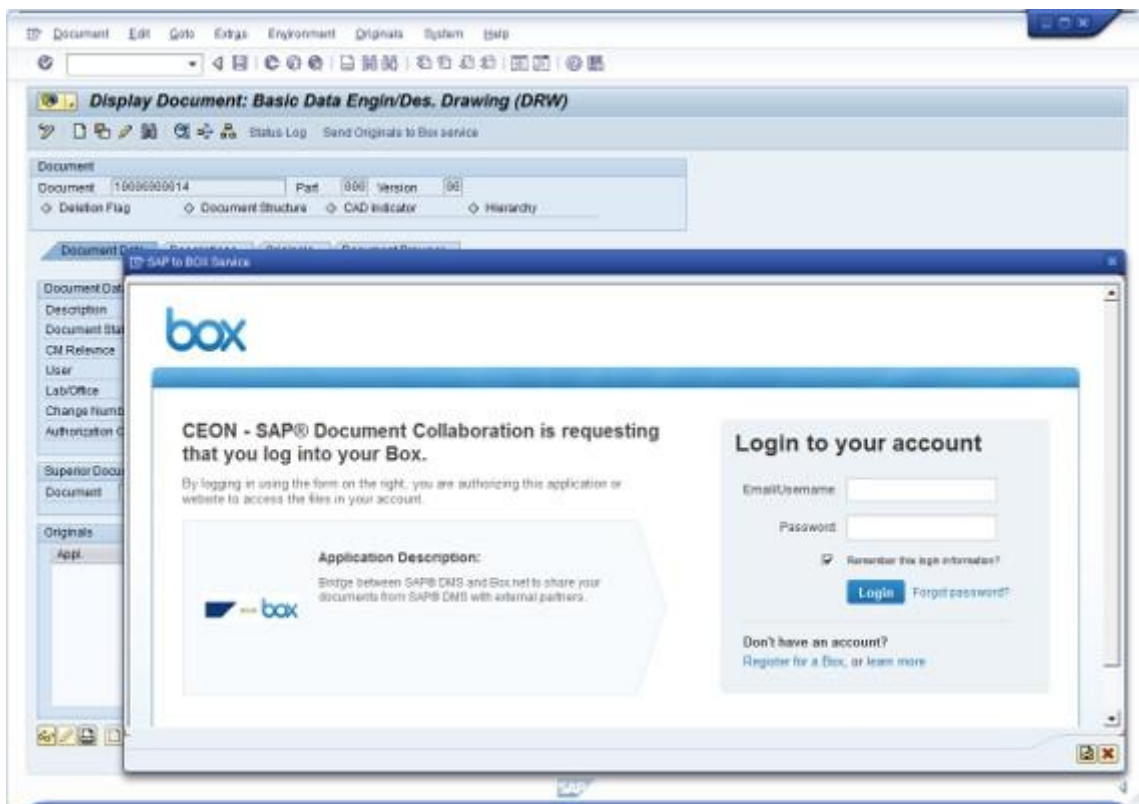
The procedure for application of SAP partnership is in progress.

# CEON – SAP® Document Collaboration

Share your documents from SAP® DMS (Document Management System part of SAP® ERP/PLM) with external partners. Selected files will be placed in the cloud solution from Box.net where you can collaborate with external partners like suppliers, distributors, customers, printing office, contractors, engineering office etc. etc.

Single or multiple Document Info Records can be selected and the files will be sent to the Box service. In addition the standard SAP document distribution functionality can be used to upload files to the Box. Files placed in the Box service can be used with the features of the Box like Sharing and managing content, Project collaboration and workflow, User permissions, Discussions and commenting etc.

External parties can submit new files (for example 2D/3D diagrams, office files, etc.) which after your approval can be created in SAP DMS (as a new Document Info Record or as a new version of a Document Info Record). And many more features...



# **CEON** – CEON PLM7+ Object Navigator package

Extend SAP PLM 7+ Object Navigator relations. With this package the SAP Object Navigation application will be extended with many more object relations for many more SAP Objects than is provided by SAP like equipments, function locations, notifications, cProject phases, sales orders, purchase orders, structures etc. etc.



For more information:  
<http://www.ceon.com.au/sap-plm>  
email: [info@ceon.nl](mailto:info@ceon.nl)